



AURORA

2 in 1 (Air Purifier & Dehumidifier)

Instruction Manual



Information in this manual is subject
to changes without notice.
Edition: 2026/01

Please read the manual carefully before using the product

READ THESE INSTRUCTIONS CAREFULLY BEFORE USAGE

1. Before use, ensure the rated voltage indicated on the appliance match the supply voltage.
2. If the supply cord shows visible signs of damage, it must be replaced by the manufacturer, its service agent, or similarly qualified persons to avoid hazard. Regularly check the condition of the power cord for any damage.
3. Do not allow the power cable to be pulled or crushed by a heavy load.
4. Never connect the unit with the power cord or plug that is damaged to the mains. Use only a grounded outlet.
5. Do not connect any other appliances on the same line. It may result in over-heating and fire.
6. Never immerse the power cable, plug and appliance in water, or rinse it under the tap to avoid the risk of electrocution.
7. Never disassemble you're the unit or replace any components to avoid any hazards.
8. To avoid the risk of fire, do not operate the unit in the presence of explosive fumes and/or flammable.
9. Do not dismantle or modify the unit without prior authorization.
10. Unauthorized servicing may result in electric shock, malfunction, or fire.
11. Do not use solvents or chemical cleaners such as benzene, thinner, or similar substances to clean the product.
12. Keep the unit away from aerosols or spray products.
13. Do not install or operate the unit in kitchens or areas containing greasy particles, as grease accumulation will significantly reduce the service life and effectiveness of the filter.
14. Ensure unit is always placed on a leveled surface
15. This air purifier is not designed to remove carbon monoxide (CO). It should not be used as a safety device for toxic gas detection or removal.
16. Do not use the air purifier in rooms where fumigation-type pesticides are applied, as chemical residues may damage the unit and pose health risks.
17. Do not place or operate the unit in high-temperature or high-humidity environments, such as bathrooms. Exposure to moisture may cause electrical leakage, leading to electric shock or fire.
18. Always ensure the unit and its exterior are completely dry before operation.
19. Operating the appliance when wet may result in short circuits, electric shock, or fire.
20. Keep the product away from volatile or flammable substances to reduce the risk of fire or explosion.
21. Immediately switch off the power and disconnect the unit if any abnormalities are observed, such as unusual noise, odor, smoke, or malfunction.
22. In case of dropping, visible deterioration, or leakage, the product should not be used. Do not drag the product on the floor.
23. Do not inject perfume, vinegar, descaling agents, or other chemicals onto the product. This product is not suitable for use with these chemicals.
24. This product is intended for household indoor usage. Not for usage in bathrooms or outdoors.
25. This appliance can be used by children aged 8 years and above and persons with reduced physical, sensory, or mental capabilities or lack of experience and knowledge if they have been given supervision or instruction concerning the use of the appliance in a safe way and understand the hazards involved.
26. Do not allow children to play with the product.

TECHNICAL SPECIFICATIONS

Product Code: 388132

Supply voltage: 100-240VAC,50~60HZ

Mode: Air purifier & Dehumidifier

Rated Power: 80W

Length of power cord: 1.3m

Dimensions: H388/W189/D189mm

Noise level: 32-44db

Applicable area: 5-25²

Clean air delivery rate(CADR):120m³/h

Dehumidification capacity:1L/D(30°C 80%RH)

Water tank capacity:700ml

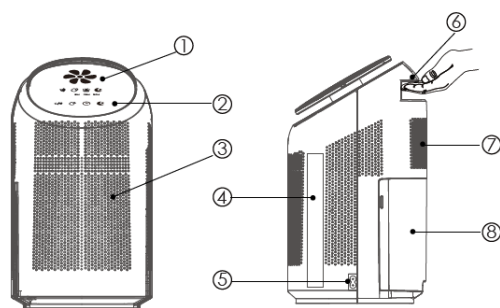
STORAGE

1. Ensure to turn the power OFF on the air purifier
2. Unplug the power plug from the power outlet when usage is completed
3. Place the unit in an upright position and store in a cool and dry place.

CLEANING & MAINTENANCE

1. Ensure unit is turned off and unplug the unit from supply.
2. Do not use harsh or abrasive cleaners or solvents.
3. Do not immersed the unit in water or other liquids.
4. Do not drop, throw, or try to bend it.
5. Do not attempt to disassemble the appliance.
6. Remove the water tank, open the tank cover and rise the tank and cover with clean water and dry it before installing back
7. Always make sure the air purifier inlet and outlet is free from dust accumulation, use only a dry cloth or brush to clean the unit.
8. It is recommended that the filter are replaced every 6 months of usage

PRODUCT OVERVIEW



- | | |
|----------------------------|-------------------|
| ① LED large display screen | ⑤ Power interface |
| ② Touch screen buttons | ⑥ Handle |
| ③ Air inlet | ⑦ Outlet |
| ④ Filter element | ⑧ Water tank |

FUNCTIONS

This 2-in-1 air purifier and dehumidifier combines air purification and dehumidification in a single appliance. It offers two modes to suit the user's needs, keeping indoor air fresh while maintaining optimal humidity levels. The unit also features a built-in defrost function, allowing it to dehumidify effectively even in low-temperature environments, with an operating range of 5°C to 50°C.

INDICATIONS

Water tank full: When the water tank is full, the buzzer will sound three times, indicating it's time to empty the tank. During this time, dehumidification will pause and will only resume once the water tank is emptied.

Water tank not installed: If the tank is not installed properly, a red indicator light will appear on the display, and the buzzer will sound three times. Dehumidification will not operate until the tank is correctly installed.

BUTTON FUNCTIONS

Power: Press to turn the unit ON or OFF.



Dehumidification: Press to activate the dehumidification function. The dehumidification indicator light will turn on. During this time, both air purification and dehumidification are active. Press again to turn off the dehumidification function.



Timer: Press to set the timer. The display will cycle through 8H → 12H → 24H → off (continuous operation) with each press.

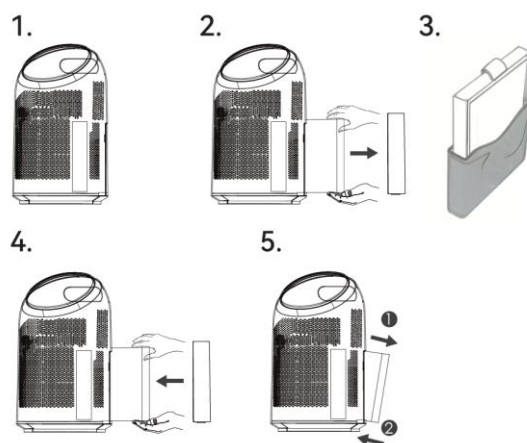


Sleep: Press to activate sleep mode. The sleep icon will appear on the screen, and the unit will operate quietly. Press again to exit sleep mode.



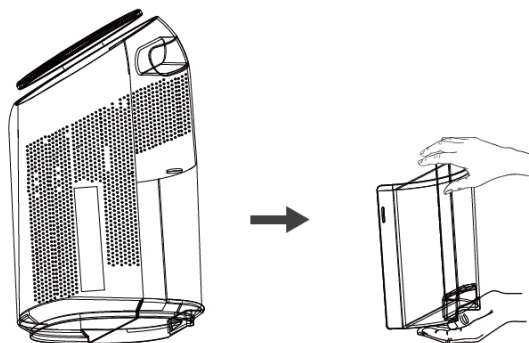
STEPS TO REPLACE THE FILTER

1. Pull up the top of the filter cover on the front panel and lift slightly to remove it.
2. Remove the old filter. (Recommended to replace every 6 months)
3. Remove all packaging materials from the new filter.
4. Ensure the side of the filter with the pull handle faces inward, then insert the filter into the unit.
5. Reinstall the filter cover: first, clamp the bottom of the cover onto the front panel's filter port (①), then push the cover toward the unit body until it is securely in place (②).



STEPS TO EMPTY THE WATER TANK

1. Turn off the machine and pull out the water tank using its handle.
2. Insert your fingers into the water tank cover handle, remove the cover, and pour out the water.
3. After emptying the tank, rinse it thoroughly with clean water to prevent scaling.
4. Replace the water tank cover securely and reinstall the tank into the unit.



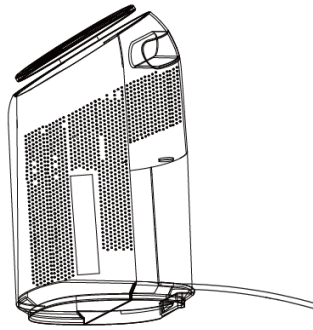
Attention: Do not move or damage the water tank float, otherwise the machine will not operate normally or cause other unnecessary malfunctions.

DRAINAGE PIPE USE

This product offers convenient drainage methods to suit different usage scenarios.

Water tank configuration : In this configuration, the water tank collects moisture during operation. When the tank reaches full capacity, the intelligent sensing system automatically stops the unit to prevent overflow.

Drainage Pipe configuration: Ideal for long absences, travel, or extended periods away from home. Simply open the water tank plunger located at the bottom of the water tank and attach the drainage pipe provided along with the unit, ensuring a secure, leak-free connection. Moisture is then continuously discharged through the pipe, preventing water overflow during unattended operation.



Troubleshooting

Cause	Solution
Machine not running	<ul style="list-style-type: none">• Check that the power supply is properly connected.• Ensure the main power supply is switched on.• Empty the water tank if it is full.
Poor dehumidification effect (Low water in tank)	<ul style="list-style-type: none">• Check the filter for dirt or blockage.• Ensure the air inlet is not clogged with dust or debris.• Check whether the surrounding temperature is too low, as colder temperatures result in lower humidity and reduced dehumidification performance.
The air volume decrease	<ul style="list-style-type: none">• Check whether the filter is clogged.• Ensure there are no obstructions around the unit's air inlet and outlet.
Excessive noise	<ul style="list-style-type: none">• Ensure the unit is placed on a level surface.
Water leakage	<ul style="list-style-type: none">• Check whether the water tank is full.• Ensure the unit is placed on a level surface.• Check whether the water tank plunger is loose.

Warranty

A faulty connection or any damage resulting from the wrong usage, or which is in contradiction to the instructions in this leaflet will render the warranty void.

