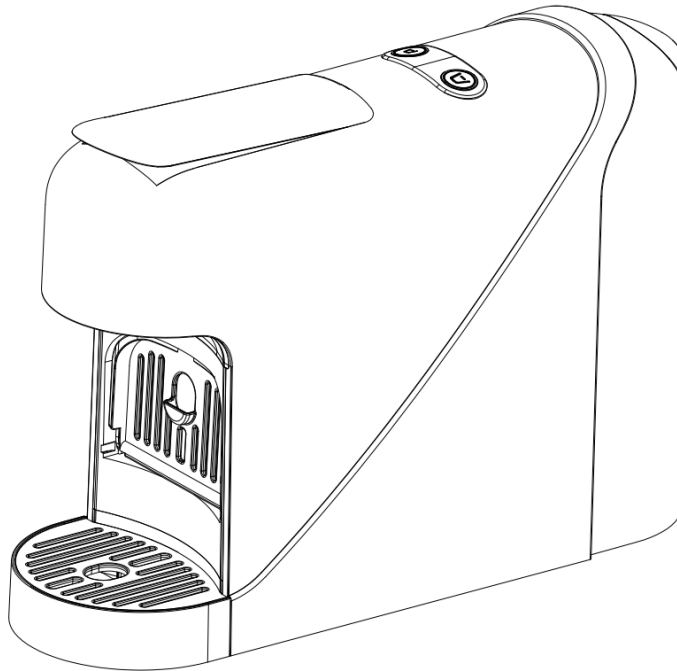




# **MOLTON**

**(Coffee Machine)**

## **Instruction Manual**



Information in this manual is subject  
to changes without notice.  
Edition: 2026/02

Please read the manual carefully before using the product

## **READ THESE INSTRUCTIONS CAREFULLY BEFORE USAGE**

1. Before use, ensure the rated voltage indicated on the appliance match the supply voltage.
2. If the supply cord shows visible signs of damage, it must be replaced by the manufacturer, its service agent, or similarly qualified persons to avoid hazard. Regularly check the condition of the power cord for any damage.
3. Do not allow the power cable to be pulled or crushed by a heavy load. Never connect the steamer with the power cord or plug that is damaged to the mains. Use only a grounded outlet.
4. Do not connect any other appliances on the same line. It may result in over-heating and fire.
5. Never immerse the power cable, plug and appliance in water, or rinse it under the tap to avoid the risk of electrocution.
6. Never disassemble the appliances or replace components to avoid any hazards.
7. To avoid the risk of fire, do not operate the unit in the presence of explosive fumes and/or flammable.
8. To avoid injury, never open the brew chamber while the appliance is operating.
9. Use as Intended: Only use the appliance as intended. Scalding may occur if the lid is removed during brewing. Use only capsules designed for this appliance. Do not force capsules that do not fit.
9. Place and operate the appliance on a level surface
- 10 The power cord should be unplugged from the AC outlet before filling the water tank. The water inlet must remain closed during use. When the tank has no water, stop using the product.
- 11 In case of dropping, visible deterioration, or leakage, the appliance should not be used. Do not drag the product on the floor.
- 12 Vapors may cause damage to the wall or door when used in proximity.
- 13 The appliance is meant to be used with fresh water. If the local water quality is very hard, scale build-up can be very fast. Injecting distilled water into the tank can be carried out to extend the product's life.
- 14 Do not fill the removable water tank with, vinegar, descaling agents, or other. This product is not suitable for use with any chemicals, other than fresh drinkable water.
- 15 This product is intended for household indoor usage. Do not place the appliance on or near hot gas or electric burners, or in a heated oven.
- 16 Plug the appliance in first, then connect to the wall outlet. To disconnect, turn the appliance off, then remove the plug.

17. After use, turn off the power supply ,unplug the power cable and let it cool completely before cleaning and storing it. Allow the appliance to cool down for 20 minutes after use or before cleaning the product and emptying the water tank or storage.

18. This appliance can be used by children aged 8 years and above and persons with reduced physical, sensory, or mental capabilities or lack of experience and knowledge if they have been given supervision or instruction concerning the use of the appliance in a safe way and understand the hazards involved.

19. Do not allow children to play with the product.

## TECHNICAL SPECIFICATIONS

Product code: 8662520

Supply voltage: 220-240V~

Power: 1400W

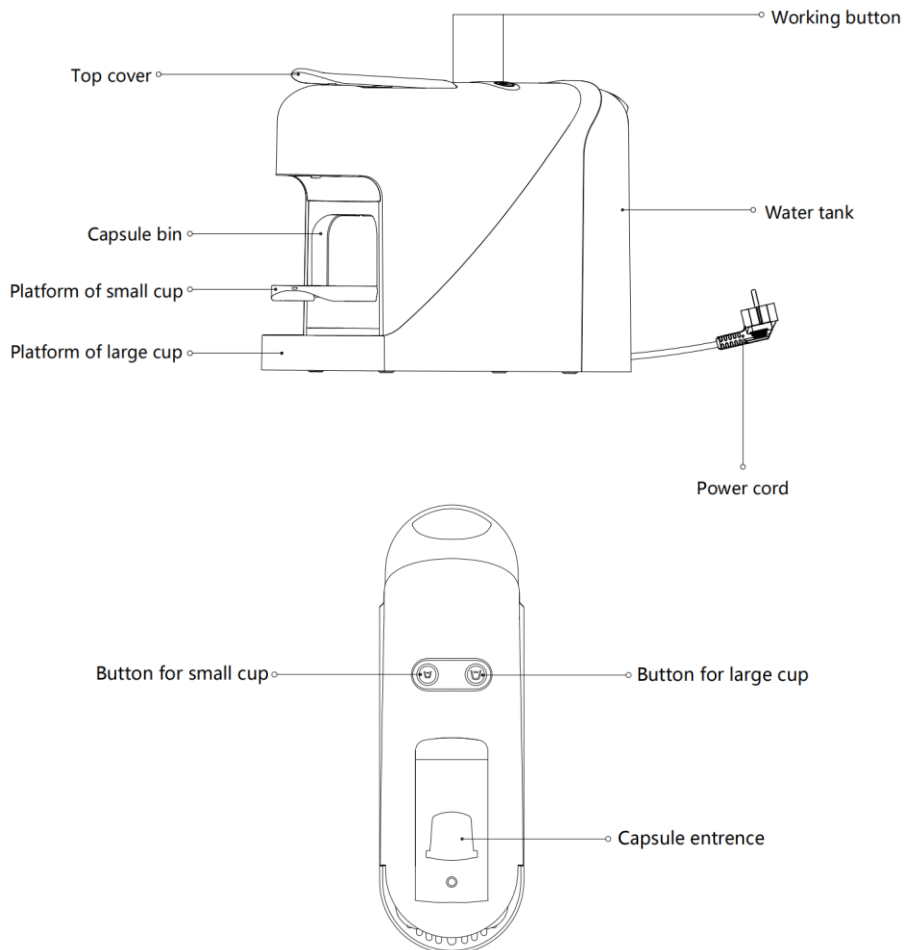
(Small Cup Logo) Espresso Shot: 40ml~

(Big Cup Logo) Lungo Shot : 110ml~

Tank Capacity: 900ml

Dimensions: H241/W112/D350mm

## COMPONENTS



## Product Overview

A capsule coffee maker with dedicated Espresso and Lungo buttons delivers consistent, one-touch brewing for standard coffee servings. The two-button interface allows users to easily select their preferred cup size with minimal effort. Its compact and straightforward design makes it ideal for hotel rooms, offices, and home use.

## Safety & Protection Features

**Thermostat Protection:** When the water tank is low or empty, the thermostat regulates the electrical current to maintain operation within the rated temperature range and prevent overheating.

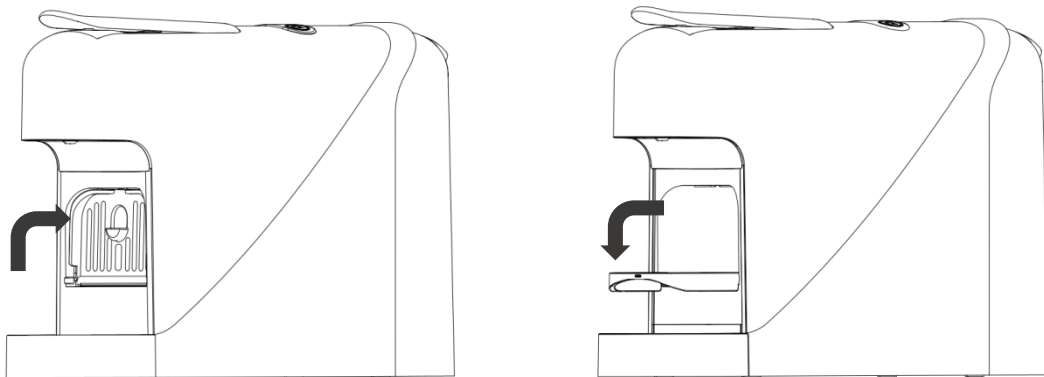
**Automatic Shut-Off:** If the machine remains inactive for more than 10 minutes, it will automatically power off to enhance safety and energy efficiency.

**Thermal Cut-Off Protection:** In the event of thermostat malfunction or failure, a built-in thermal fuse provides secondary protection.

**Over-Temperature Protection:** If the internal temperature reaches a critical threshold, the thermal fuse will immediately disconnect the power supply to prevent potential hazards.

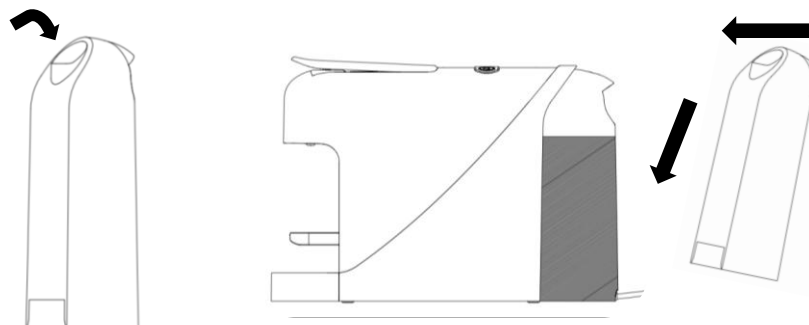
## How to Operate The Product

1. Suitable Use for Small and Large Cups
2. After removing the coffee machine from its packaging, you will find a foldable cup platform located at the front of the machine. This platform is designed for use with small cups. When the platform is folded back, the machine can accommodate larger cups or mugs. (Please refer to the images below for illustration.)



## Filling Of Water Into The Tank

- 1) Remove water tank, wash, fill the tank with room temperature drinkable water and place the water tank back onto the unit. Do not overfill the MAX indicator  
\*DO NOT FILL THE WATER TANK WITH OTHER MEANS OF LIQUID OTHER THAN FRESH WATER OR HOT WATER.



## Powering ON/OFF

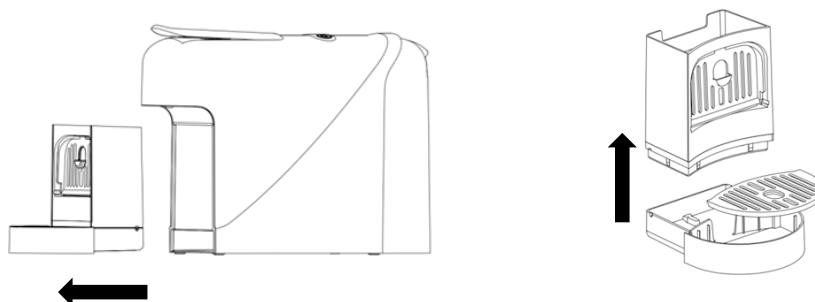
1. Plug in the machine.
2. Press either the Small Cup button or the Large Cup button to start pre-heating.
3. During pre-heating, both indicator lights will flash.
4. Pre-heating is complete when both indicator lights stop flashing and remain steadily on.

### NOTE:

- Both indicator lights flashing: The machine is pre-heating (approximately 40 seconds).
- Both indicator lights steadily on: Pre-heating is complete and the machine is ready for use.
- Pre-heating time may vary depending on voltage stability and ambient temperature.
- After pre-heating, the sides of the machine may feel warm. This is normal.
- The machine is equipped with an energy-saving and protection mode.
- If there is no operation for more than 10 minutes, the machine will automatically power off.

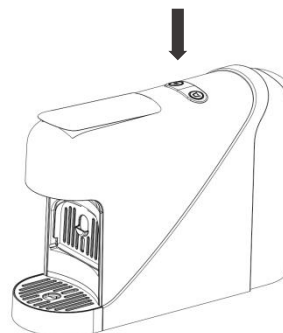
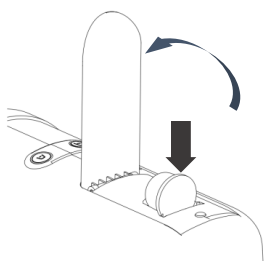
## Initial Rinsing / Cleaning Procedure

1. Fill the water tank with clean water.
  2. Place a large cup under the coffee nozzle.
  3. Press the Large Cup button 2–3 times to flush the system.
  4. After rinsing is complete, remove the capsule bin.
  5. Discard the used water and clean the capsule bin.
  6. Reinstall the capsule bin into the machine.
- (Refer to the images below for guidance.)



## Making Coffee

1. Open the top cover and insert a capsule as shown in the picture.
2. Close the cover completely.
3. Place a cup under the coffee nozzle.
4. Press the button corresponding to your desired cup size (Small Cup or Large Cup).
5. The coffee will be ready in a few seconds.
6. During brewing, you can press the button again to stop the process.
7. After brewing, open the top cover. The used capsule will automatically drop into the capsule bin.



## NOTE

1. Clean the used capsules and any liquid in the capsule bin promptly after use.
2. The capsule bin can hold up to 10 used capsules.
3. Do not tear the capsule cover or reuse capsules.
4. To ensure the machine's longevity, use only authorized and compatible capsules.

## SAFETY

- Do not open the top cover while coffee is being made.
- (Low Water Warning)
- If there is not enough water in the tank during brewing, the machine will stop automatically, and the indicator light will flash rapidly.
- Add water to the tank and press the corresponding button to resume brewing.
- Always estimate cup size to prevent overflow.

## Maintenance

1. To prevent calcium buildup, descale monthly using JVD Kettle Descaler (Ref: 8882234).
2. Descaling Steps:
3. Dilute the descaler crystal as instructed and fill the water tank to the top level (~800 mL).
4. Place a container under the coffee nozzle.
5. Plug in and press small cup or large cup to pre-heat (~50 seconds).
6. Press both buttons simultaneously for 3 seconds to start descaling.
7. Indicator lights will flash alternately.
8. Press any button to stop at any time.
9. After descaling, fill the tank with clean water and press Large Cup 2–3 times to rinse.

### Tips & Warnings

- Follow the citric acid dilution instructions.
- Do not drink water used during descaling.

## Post-Use Care

1. If the machine will not be used for a long time, unplug it and empty the water tank.
2. Before next use, press the Large Cup button 2–3 times to flush any remaining water.
3. Clean the capsule bin after each use. If the machine will be idle for an extended period, ensure there are no capsules or residual liquid inside.
4. Use pure water only. Tap water or poor-quality water may cause low water output, blockages, scaling, and reduce the machine's lifespan.

FAULT	SOLUTION
No lights	Ensure that the power cord is securely connected and the power supply is switched on
Coffee not dispensing	<ul style="list-style-type: none"><li>• Ensure the water tank contains water.</li><li>• Ensure the used capsule tray is emptied.</li></ul>
Selector buttons pressed but not responding and lighted	<ul style="list-style-type: none"><li>• Ensure top cover is fully closed</li></ul>
Water leaked from the tank	<ul style="list-style-type: none"><li>• Ensure water is not filled beyond MAX indicator</li><li>• Ensure water tank is fitted securely</li><li>• Ensure unit is placed on a leveled surface</li></ul>
Noisy operation	<ul style="list-style-type: none"><li>• Ensure the water tank is properly installed and sufficiently filled.</li></ul>



This marking indicates that this appliance should not be disposed with other household wastes. To prevent possible harm to the environment or human health from uncontrolled waste disposal, recycle it responsibly to promote the sustainable reuse of material resources.

## Warranty

A faulty connection or any damage resulting from the wrong usage, or which is in contradiction to the instructions in this leaflet will render the warranty void.